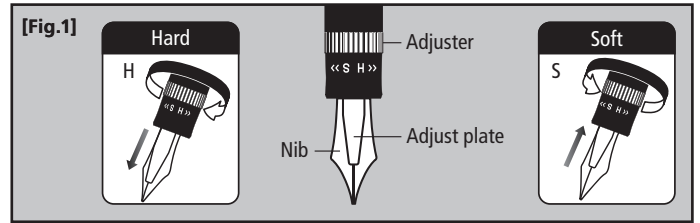


Justus / Use and Care Guide

How to adjust nib tension

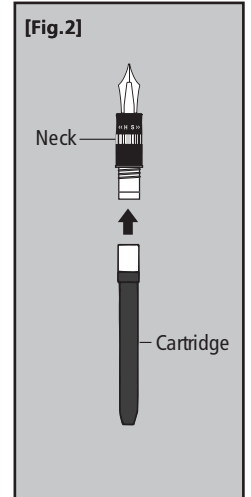
Twist the Adjuster to the mark "H," the pen touch becomes harder, or to the mark "S," it becomes softer. **[Fig.1]**



How to fill with ink

Cartridge type

- (1) Unscrew the neck from the pen barrel.
 - (2) Remove the empty cartridge from the neck while holding the neck with the nib pointing up.
 - (3) Insert a new cartridge firmly. Insert the cartridge straight in. Put it in straight without turning or twisting; otherwise, the valve may not open. **[Fig.2]**
- * When using an ink cartridge for the first time, remove the inserted converter.



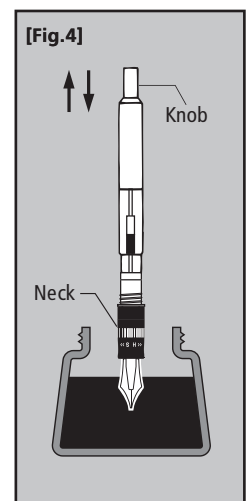
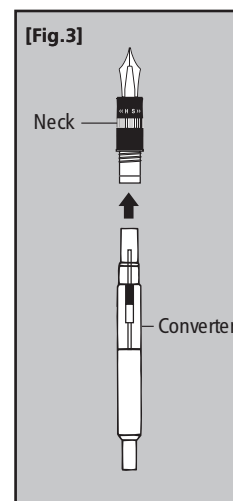
Converter type

<Piston type Converter (CON-70N)>

With this type of converter, the pen can be easily filled with ink by a simple operation of the knob on the converter. **[Fig.3]**

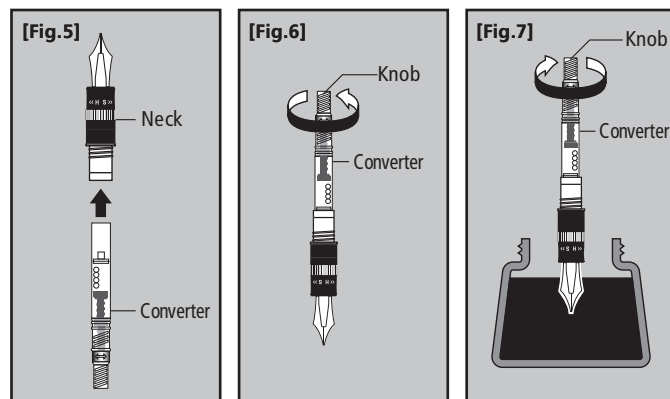
* The oil for lubrication may be visible inside, but it does not affect the use of the pen.

- (1) Unscrew the neck from the pen barrel.
Dip the nib vertically into the ink until it is about halfway submerged. **[Fig.4]**
- * Be careful not to hit the bottle with the nib point to protect the nib.
- (2) Press the knob five or six times to fill the ink tank with ink completely. **[Fig.4]**



<Rotation type Converter (CON-40)>

- (1) While holding the neck with the nib pointing up, unscrew the neck from the pen barrel and then insert the converter. [Fig.5]
- (2) Rotate the converter knob in the direction of the arrow. [Fig.6] (Handle the pen gently after wipe of ink in the nib with either soft tissue paper or cloth. Ink may spatter if the nib contains sufficient ink.)
- (3) As shown in Figure 7, dip the nib vertically into the ink until half of the nib is submerged. [Fig.7]
 - * Be careful not to hit the bottle with the nib point to protect the nib.
- (4) Fill the converter with ink by turning the knob in the direction of the arrow. [Fig.7]



-
- * To replace the converter with an ink cartridge, first remove any remaining ink from the converter. Then hold the neck of the pen with the nib pointing up and slowly remove the converter by slightly pulling it straight or twisting it clockwise. Any ink remaining in the converter should be washed off with water. Dry the converter completely and store it.
 - * It may be impossible to fill the converter with ink if the amount remaining in the bottle is low. Refill inks from bottles that have a sufficient amount of ink remaining.
 - * Any ink on the neck, nib, or the control plate should be wiped off with a soft cloth or similar material before use.

Care and Storage

- Keep the pen out of the reach of children and away from excessive heat, cold, or direct sunlight.
- If the pen is not used regularly, drain the ink from it. Then, clean the inside by filling and draining the pen with clean water several times.
- This pen contains custom-made precision parts. Do not try to repair it yourself.

Remarks

- Please do not use this product for any purpose other than writing.
- Keep away from children.
- After use always replace the cap firmly.
- When starting to use a fountain pen with an ink cartridge for the first time, gently squeeze the cartridge to start ink flow.
- Prevent ink from spilling by pointing the nib upward while replacing the cartridge.
- Cleaning the neck
 - Over longer periods of usage, the penholder may clog with ink sediment. Wash the neck with clean water occasionally.
 - * Please refrain from washing the cap and barrel. This may cause a malfunction.
- Changes in air pressure may cause the ink to leak or gush out, so do not use this pen on a plane.
- Please use PILOT ink (cartridge or bottled) for PILOT fountain pens. Mixing other inks or old ink may cause problems.
- Note that it may not be possible to remove this ink if it accidentally gets on your clothes.
- Pilot's Tsuwairo pigment ink for fountain pens is not compatible with this pen.
- Please avoid dropping the fountain pen or applying excessive force since the shock could cause it to malfunction.
- Please be warned that applying chemicals, including solvents, such as alcohol, causes cracks or discoloration.
- Do not turn the Adjuster forcedly when the Adjust plate is stuck onto the nib by dried ink.