

Mechanical Pencil / Use and Care Guide<Tip chuck type, cap slide type>

Tip chuck type, cap slide type

● **For writing**

- (1) Turn the mouthpiece downward and press the cap to extend the lead. **[Fig.1]**
- (2) When one lead is finished, press the cap repeatedly until the new one comes out.

● **After writing**

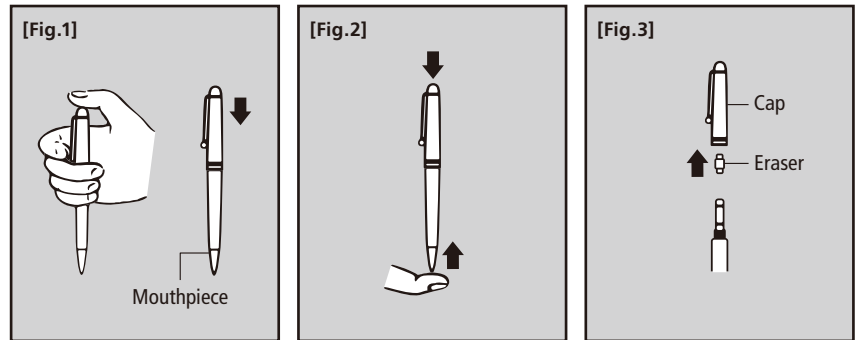
The lead can be retracted by gently pushing the top while pressing the cap. **[Fig.2]**

● **To refill lead**

Remove the cap and the rubber eraser. Put the new lead into the lead reservoir. **[Fig.3]**

- You can write until the last 1 mm of the lead.

* The mouthpiece is bonded and should not be removed by force.



Remarks

- Please do not use this product for any purpose other than writing.
- Handle with care because the point is sharp.
- Do not swallow the parts, such as the eraser, and mouthpiece.
- Keep away from children.
- Do not store in places exposed to direct sunlight or high temperatures.
- Please use PILOT's genuine 0.5 mm lead for refills. There are 8 degree leads.
- Please use PILOT HERF-10 eraser refill.
- Replacement erasers are also available. Use a genuine PILOT eraser refill.
- Please be warned that applying chemicals, including solvents, such as alcohol, causes cracks or discoloration.